

Geddy, Bill

From: Brent Myers [bmyers@di-construction.com]
Sent: Monday, December 06, 2010 8:21 AM
To: Geddy, Bill
Subject: Sigma Nu proposal
Attachments: Exterior Elevation sketch.pdf; FLOOR PLAN 20101202.pdf; Sigma Nu Proposal.pdf

Bill,

Good Morning. Sorry that I did not join you this past weekend. Ended up getting home late Friday from Orlando and then resting most of the day.

Regarding the Sigma Nu house, attached you will find our proposed layout which we feel is a cost effective way to build the 2500 S +/- social room as well as add four isolated student rooms. Rooms that will help pay for the addition!

Additionally we would like to add:

1. You will notice that the property line is angling away from the house as it gets toward the back. This allowed us to extend the bedrooms out further than originally thought, which helped.
2. The bathroom/bedroom layout the previous architect had laid out did not work as it was not to scale and it would not have fit with a 12' wide room, so we modified the bathroom to fit.
3. We are using scissor trusses in the Social Room, but flat trusses over the bedrooms. This will allow for a large mechanical attic space if we use attic trusses. We can run ductwork up in the scissor trusses from there to handle the big room. There is a "centrally" located water heater closet to handle the public toilets and also the resident rooms.
4. We will have to verify with the local code enforcement that they will allow the modification to the one stairwell. We are making a non-compliant stair exit a little better than it is currently, but it may still not meet code. We can discuss further.
5. You will notice this new room is tied directly into the existing house. We will have to address the roof line and the fire wall, but it can be accomplished.
6. We would have a small covered area at the stairwell exit closest to the driveway which would be covered and could be used by the smokers.

Please review and feel free to contact me this afternoon.

On a separate note, most likely I will try and go this Saturday with Barrett. Are you interested?

Sincerely,

Brent Myers



DIMENSIONS INC.
ARCHITECTS • INTERIORS • CONSTRUCTION SERVICES

December 2, 2010

Sigma Nu Fraternity
Statesboro, GA
Attn: Mr. Bill Geddy

Re: House Addition

Dear Bill:

Dimensions, Inc. is pleased to offer our services to you. We are excited about the opportunity Sigma Nu has to improve the existing house.

We have performed some preliminary planning work which you will find enclosed. This helps both Sigma Nu as well as Dimensions, Inc. to get an understanding of the scope and direction of the project. Obviously, we will want to hear your feedback, but it is a starting point at least.

Our proposal to proceed with the project is as follows:

Schematic Design/Design Development

- Preliminary Site Plan
- Preliminary floor plan
- Preliminary Exterior Elevations
- Code Review
- (2) Owner meetings to review design
- Preliminary mechanical, electrical and plumbing considerations
- Preliminary Structural Concepts

Construction Documents

- Fully dimensioned & detailed drawings
- Demolition plans
- Interior Elevations
- Mechanical, electrical and plumbing engineering & drawings
- Structural engineering and drawings
- Details and sections
- Interior Design concepts
- Specifications
- Submittal to necessary jurisdictions for permitting (fees by Owner)

Construction Administration

- RFI responses from bidders
- Inspections as needed
- Field calls from contractors
- Final punch list

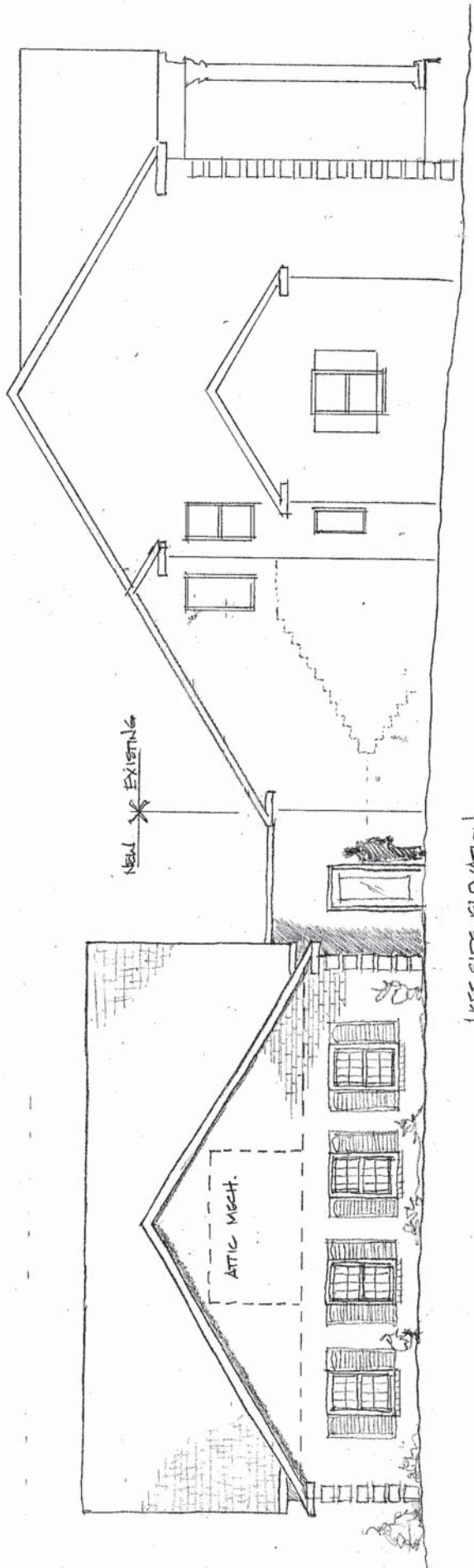
Each phase will be invoiced in full upon completion. In the event that a phase spans greater than 30 days, Dimensions, Inc. will invoice for work completed that month. A 2% per month late fee will be assessed on all balances past due 30 days.

If you are in agreement with these terms, please let us know and we will execute an AIA Owner/Architect Agreement for your review. We appreciate the opportunity to quote our services to you. Please call with any questions.

Sincerely,

A handwritten signature in black ink, appearing to read "J. Darin Claxton". The signature is fluid and cursive, with a long horizontal stroke at the end.

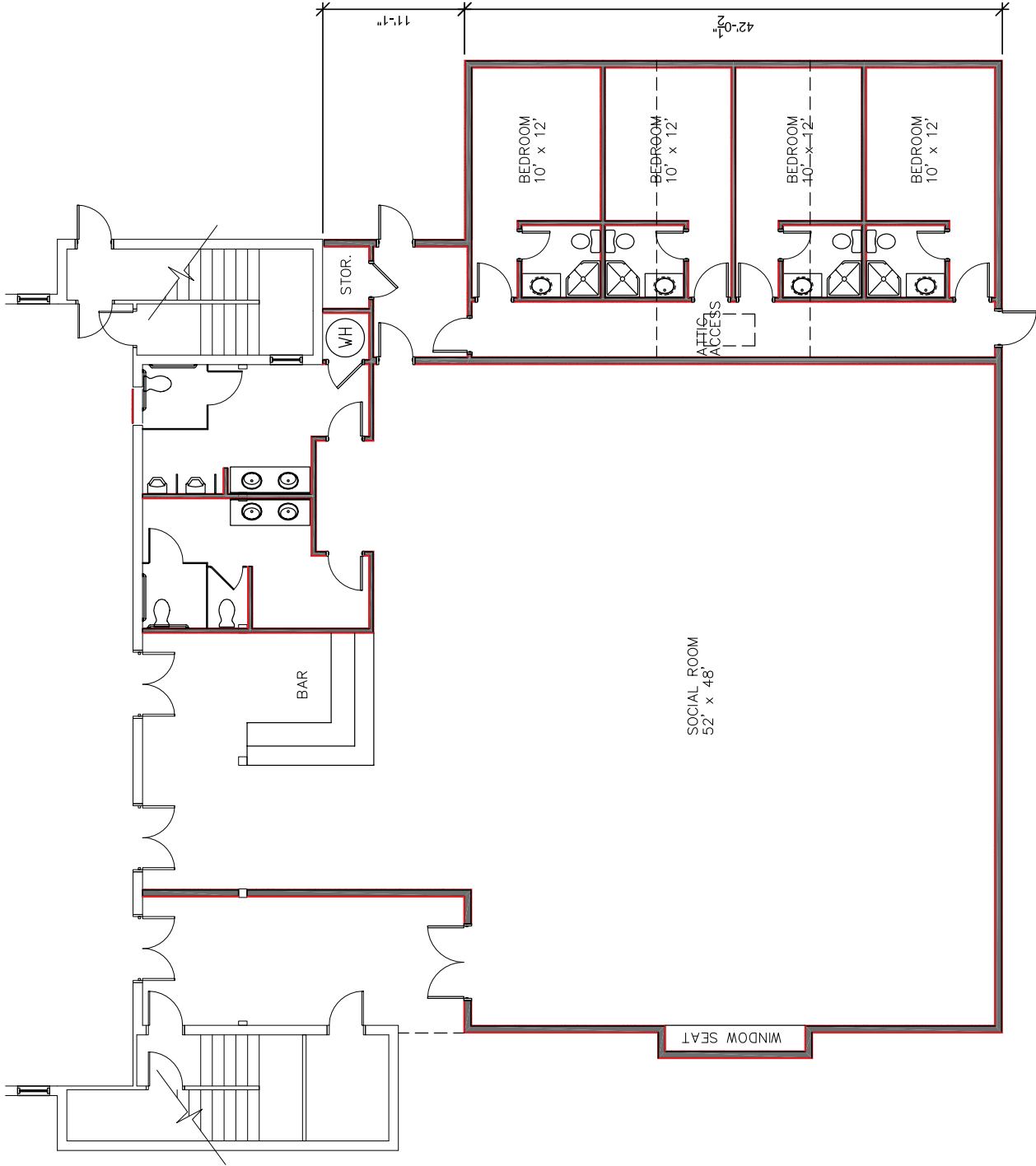
J. Darin Claxton
Project Architect



NEW * EXISTING

ATTIC W/CH.

LEFT SIDE ELEVATION
1/8" = 1'-0"



DIMENSIONS, INC. ARCHITECTS
DECEMBER 2, 2010

FLOOR PLAN
1/8" = 1'-0"

SIGMA NU FRATERNITY HOUSE
STATESBORO, GA